



FOR SALE

Al's Truck Parts

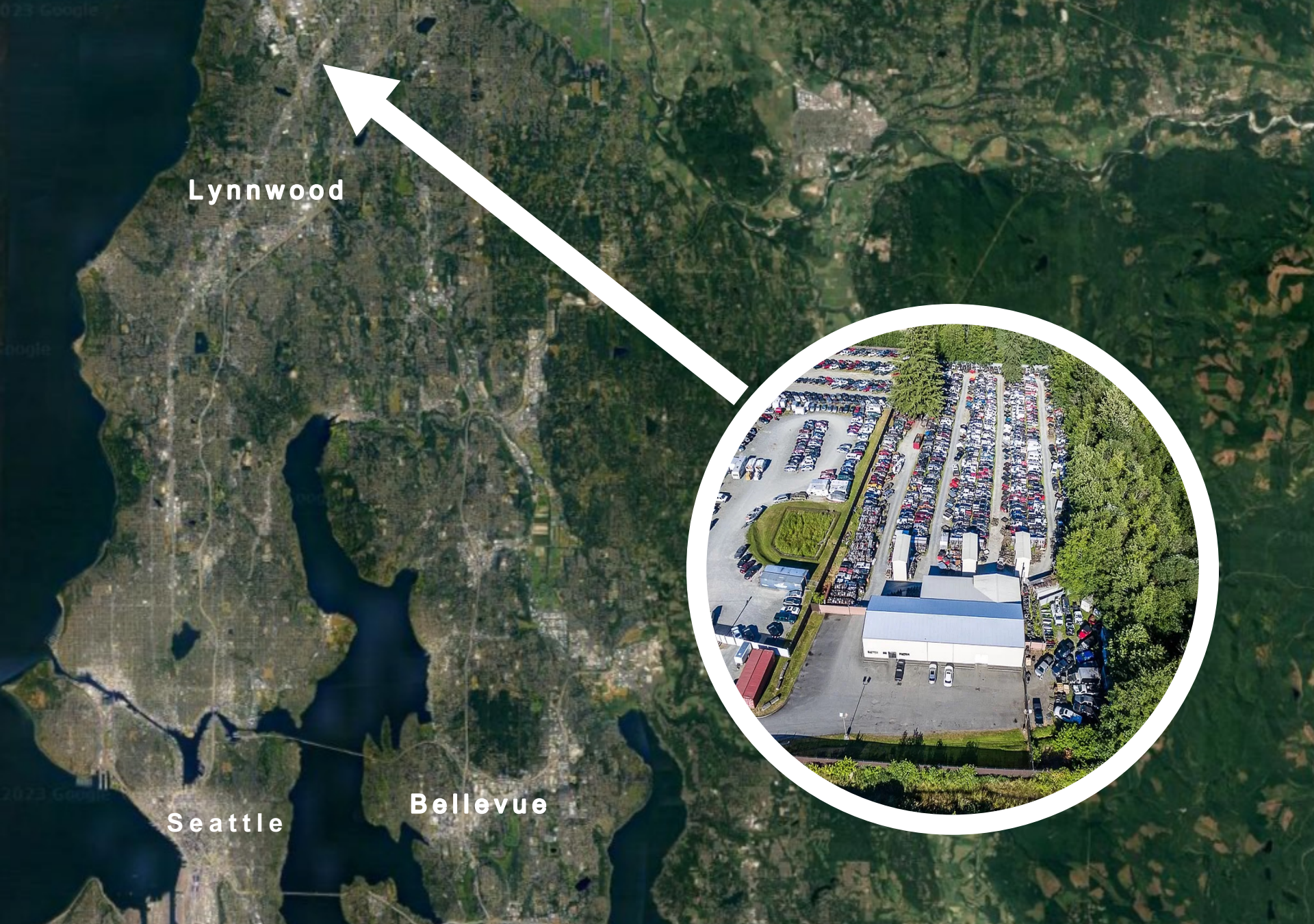
13311 Highway 99
Everett, WA

Devin Haskell

425.417.7018

devin@srecommercial.com





Lynnwood

Seattle

Bellevue



OFFERING SUMMARY

- Fully Operational Business – Al's Truck Parts – Assets Available
- Rare 4.35 Acre Snohomish County Parcel
- Permitted Uses: Automobile Wrecking Yard (conditional, grandfathered), Construction Contracting, Multifamily, Townhouse, Hotel, Manufacturing, Retirement Housing, Warehousing



PROPERTY DETAIL

- Metal Sided (1983) Warehouse, Office, Salvage Shop
- Currently Configured as Truck Parts Salvage Yard
- Close Access to Interstate 5, Highway 99, Highway 525
- Excellent Visibility to 40,000 VPD Highway 99

Address	13311 Highway 99, Everett 98204
Total Building Size	8,960 SF
Warehouse Floor 1	4,960 SF
Warehouse Floor 2	4,000 SF
Total Land Size	4.35 Acres (189,486 SF)
Parcel Number	00373300700501
Zoning	Urban Center (UC)
Urban Center (UC) Use Matrix	LINK
Urban Center (UC) FAQ	LINK
Seller	Triple J & K Investments, LLC
Business	Al's Truck Parts, Inc
Property Taxes (2023)	\$18,365.16
Year Built	1983





CONTACT

Devin Haskell

425.417.7018

devin@srecommercial.com

DISCLAIMER

SRE represents the Seller in this offering. Information contained herein has been obtained from reliable sources and is not guaranteed. Neither Seller nor SRE make any representations or warranties regarding the accuracy of this information. Prospective buyers should carefully verify all information contained herein.

www.srecommercial.com