

FOR SALE

1407 S Dearborn St
Seattle 98144



Devin Haskell

425.417.7018

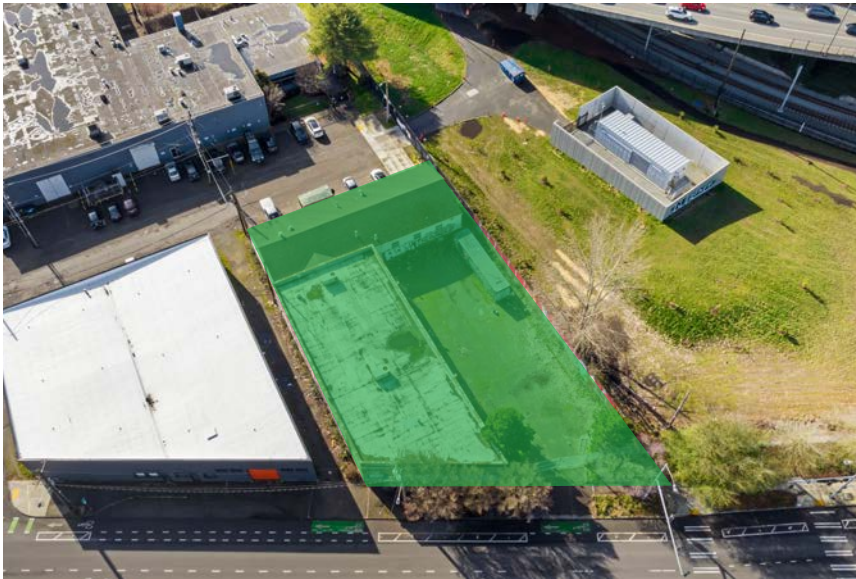
devin@srecommercial.com



OFFERING SUMMARY

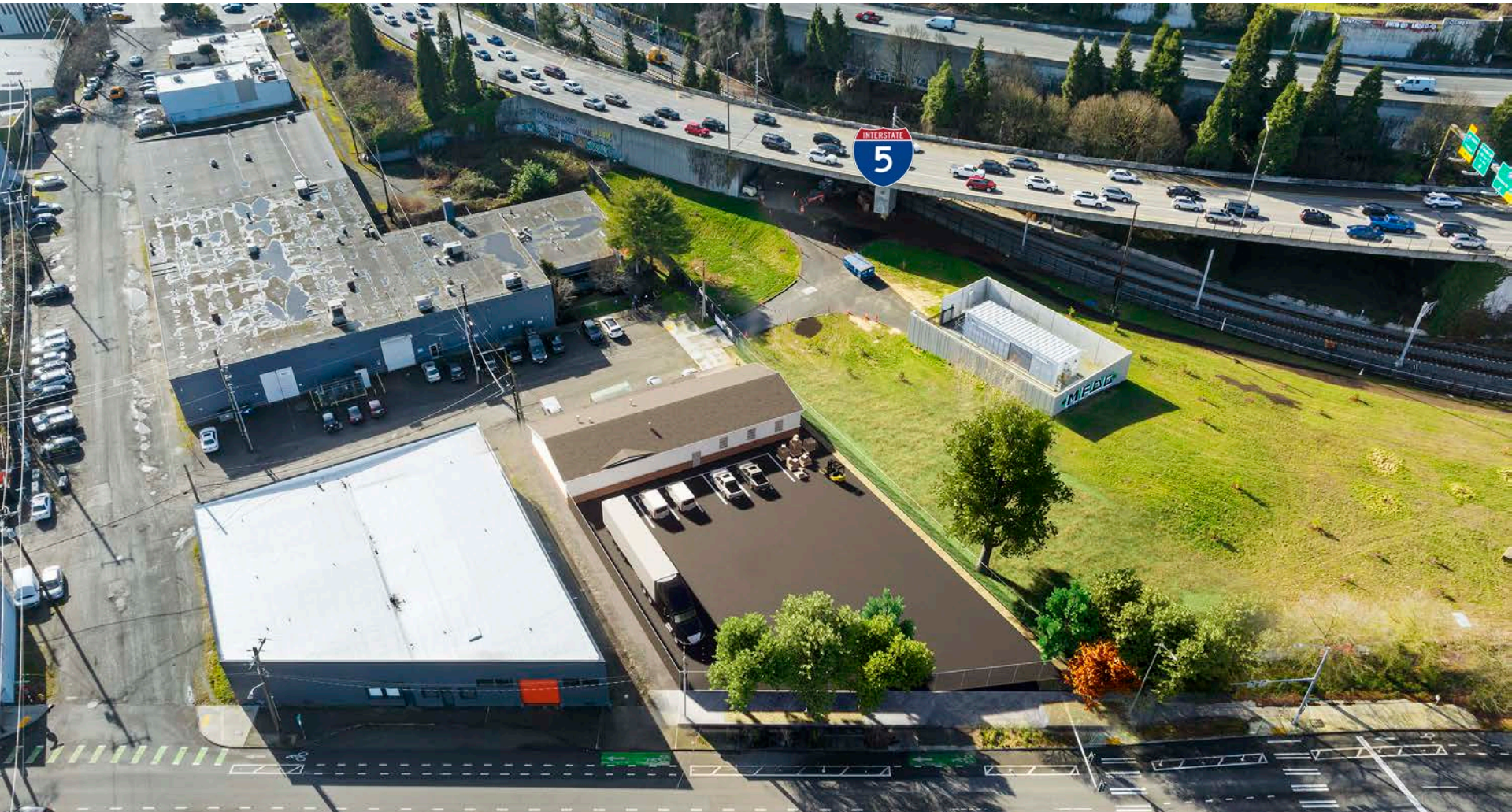
- Rare close-in Seattle industrial warehouse, office and yard
- Former Yuen Lui Studios photo warehouse
- Across the street from Goodwill Seattle HQ
- Vacant - owner user or value add investor opportunity

Address	1407 S Dearborn St, Seattle 98144
Total Building Size	10,050 SF
Industrial Warehouse	4,000 SF
Brick Office	6,050 SF
Total Land Size	15,800 SF
Parcel Numbers	713430-0245, 713430-0230, 713430-0235, 713430-0225
Parking Spaces	20
GL Doors	1
Year Built	1921
Zoning	IC65



PROPOSED OFFICE STRUCTURE REMOVAL

- This image is a rendering
- Shows demo of existing 6,050 SF office structure
- Leaves 4,000 SF warehouse – 11,800 SF yard
- Permitting process initiated
- Bid available for review



CONTACT

Devin Haskell
Senior Associate
425.417.7018
devin@srecommercial.com

DISCLAIMER

SRE represents the Seller in this offering. Information contained herein has been obtained from reliable sources and is not guaranteed. Neither Seller nor SRE make any representations or warranties regarding the accuracy of this information. Prospective buyers should carefully verify all information contained herein.

www.srecommercial.com